

# IHSA Required Scales

## Piccolo

All scales for wind instruments shall be played two octaves where applicable but one octave where range restricts.

Scales and the chromatic will be played from memory.

The scales listed, including the chromatic scale, will be called for in concert pitch and will be played two octaves, both up and down. This means that each player who plays a transposing instrument will have to transpose the given scale.

### Concert C Scale

$\text{♩} = 120$



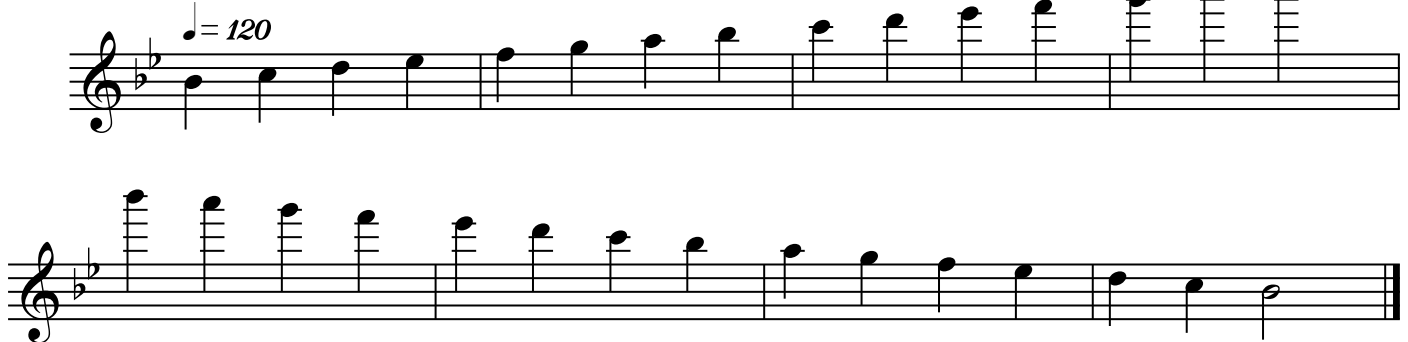
### Concert F Scale

$\text{♩} = 120$



### Concert B-Flat Scale

$\text{♩} = 120$



### Concert E-Flat Scale

$\text{♩} = 120$



Concert A-Flat Scale

♩ = 120

Two staves of music for the Concert A-Flat Scale. The first staff shows the ascending scale from G3 to G4. The second staff shows the descending scale from G4 to G3. The key signature has three flats (B-flat, E-flat, A-flat). The tempo is marked as quarter note = 120.

Concert D-Flat Scale

♩ = 120

One staff of music for the Concert D-Flat Scale, showing the ascending scale from D3 to D4. The key signature has two flats (B-flat, E-flat). The tempo is marked as quarter note = 120.

Concert G Scale

♩ = 120

Two staves of music for the Concert G Scale. The first staff shows the ascending scale from G3 to G4. The second staff shows the descending scale from G4 to G3. The key signature has one sharp (F-sharp). The tempo is marked as quarter note = 120.

Chromatic Scale-Concert G to G

♩ = 120

Three staves of music for the Chromatic Scale-Concert G to G. The first staff shows the ascending chromatic scale from G3 to G4. The second staff shows the descending chromatic scale from G4 to G3. The tempo is marked as quarter note = 120.

# IHSA Required Scales

## Flute

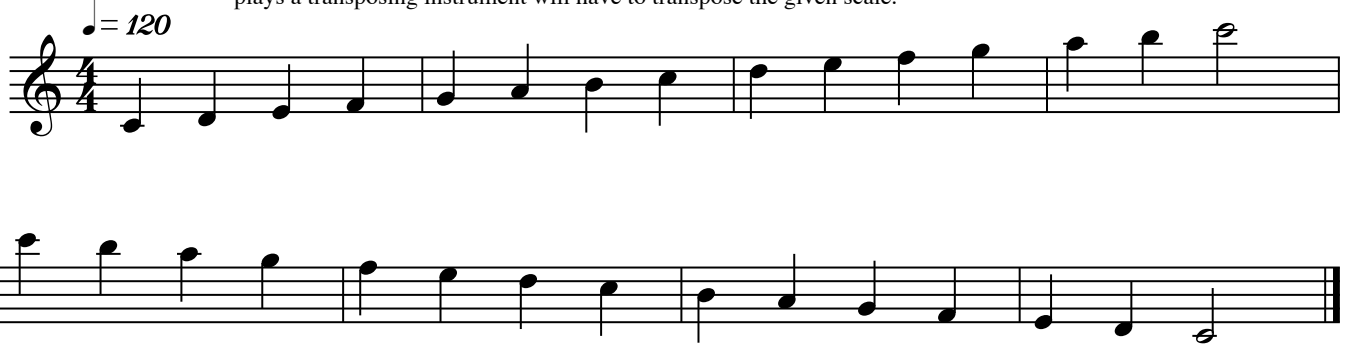
All scales for wind instruments shall be played two octaves where applicable but one octave where range restricts.

Scales and the chromatic will be played from memory.

The scales listed, including the chromatic scale, will be called for in concert pitch and will be played two octaves, both up and down. This means that each player who plays a transposing instrument will have to transpose the given scale.

### Concert C Scale

$\text{♩} = 120$



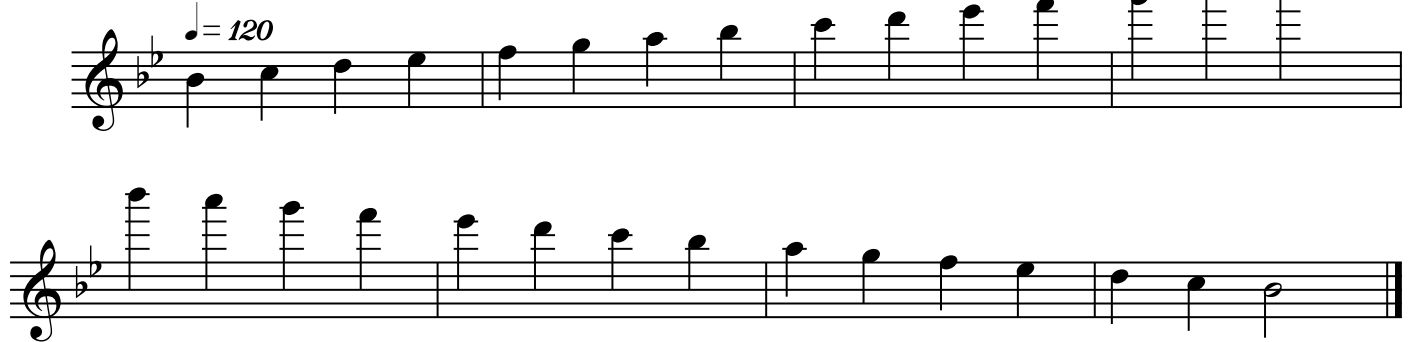
### Concert F Scale

$\text{♩} = 120$



### Concert B-Flat Scale

$\text{♩} = 120$



### Concert E-Flat Scale

$\text{♩} = 120$



IHSA Required Scales

Concert A-Flat Scale

Musical notation for the Concert A-Flat Scale. The first staff shows the scale starting on A-flat with a tempo marking of quarter note = 120. The second staff shows the descending scale.

Concert D-Flat Scale

Musical notation for the Concert D-Flat Scale. The first staff shows the scale starting on D-flat with a tempo marking of quarter note = 120. The second staff shows the descending scale.

Concert G Scale

Musical notation for the Concert G Scale. The first staff shows the scale starting on G with a tempo marking of quarter note = 120. The second staff shows the descending scale.

Chromatic Scale-Concert G to G

Musical notation for the Chromatic Scale-Concert G to G. The first staff shows the ascending chromatic scale starting on G with a tempo marking of quarter note = 120. The second and third staves show the descending chromatic scale.

# IHSA Required Scales

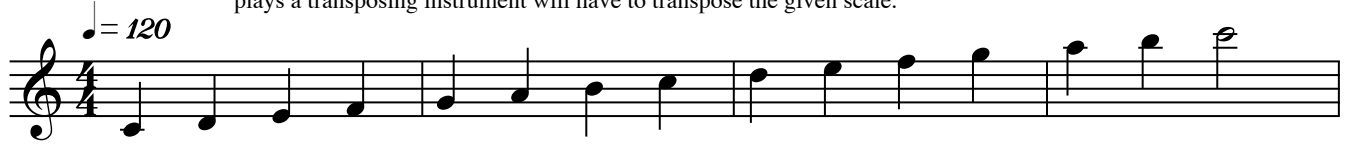
## Oboe

All scales for wind instruments shall be played two octaves where applicable but one octave where range restricts.

Scales and the chromatic will be played from memory.

The scales listed, including the chromatic scale, will be called for in concert pitch and will be played two octaves, both up and down. This means that each player who plays a transposing instrument will have to transpose the given scale.

### Concert C Scale



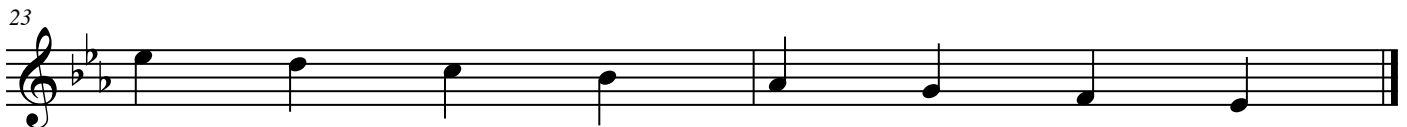
### Concert F Scale



### Concert B-Flat Scale



### Concert E-Flat Scale



IHSA Required Scales

Concert A-Flat Scale

25  $\text{♩} = 120$



27



Concert D-Flat Scale

29  $\text{♩} = 120$



33



Concert G Scale

37  $\text{♩} = 120$



39

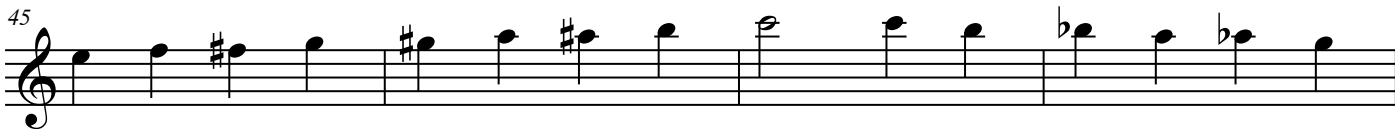


Chromatic Scale-Concert C to C

41  $\text{♩} = 120$



45



49



# IHSA Required Scales

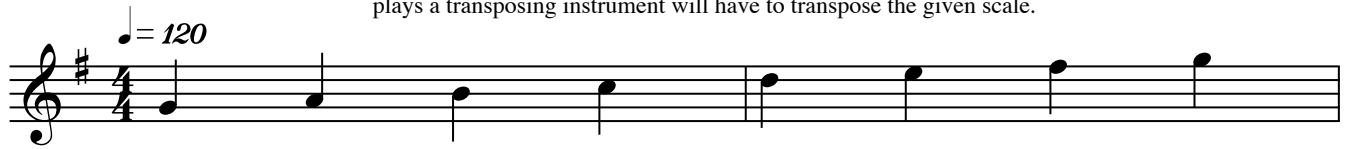
## English Horn

All scales for wind instruments shall be played two octaves where applicable but one octave where range restricts.

Scales and the chromatic will be played from memory.

The scales listed, including the chromatic scale, will be called for in concert pitch and will be played two octaves, both up and down. This means that each player who plays a transposing instrument will have to transpose the given scale.

### Concert C Scale (your G Scale)



### Concert F Scale (your C Scale)



### Concert B-Flat Scale (your F Scale)



### Concert E-Flat Scale (your B-Flat Scale)



IHSA Required Scales

Concert A-Flat Scale (your E-Flat Scale)

*♩ = 120*

Concert D-Flat Scale (your A-Flat Scale)

*♩ = 120*

Concert G Scale (your D Scale)

*♩ = 120*

Chromatic Scale-Concert C to C (your G to G Chromatic Scale)

*♩ = 120*



# IHSA Required Scales

## Bassoon

All scales for wind instruments shall be played two octaves where applicable but one octave where range restricts.

Scales and the chromatic will be played from memory.

The scales listed, including the chromatic scale, will be called for in concert pitch and will be played two octaves, both up and down. This means that each player who plays a transposing instrument will have to transpose the given scale.

### Concert C Scale

$\text{♩} = 120$

Two staves of musical notation for the Concert C Scale in bass clef, 4/4 time. The first staff shows the scale ascending from C2 to C4. The second staff shows the scale descending from C4 to C2. The tempo is marked as quarter note = 120.

### Concert F Scale

$\text{♩} = 120$

Two staves of musical notation for the Concert F Scale in bass clef, 4/4 time. The first staff shows the scale ascending from F2 to F4. The second staff shows the scale descending from F4 to F2. The tempo is marked as quarter note = 120.

### Concert B-Flat Scale

$\text{♩} = 120$

Two staves of musical notation for the Concert B-Flat Scale in bass clef, 4/4 time. The first staff shows the scale ascending from B-flat2 to B-flat4. The second staff shows the scale descending from B-flat4 to B-flat2. The tempo is marked as quarter note = 120.

### Concert E-Flat Scale

$\text{♩} = 120$

Two staves of musical notation for the Concert E-Flat Scale in bass clef, 4/4 time. The first staff shows the scale ascending from E-flat2 to E-flat4. The second staff shows the scale descending from E-flat4 to E-flat2. The tempo is marked as quarter note = 120.

IHSA Required Scales

Concert A-Flat Scale

$\text{♩} = 120$

Two staves of music for the Concert A-Flat Scale. The first staff shows the ascending scale from C2 to C3. The second staff shows the descending scale from C3 to C2. The key signature has three flats (B-flat, E-flat, A-flat). The tempo is marked as quarter note = 120.

Concert D-Flat Scale

$\text{♩} = 120$

Two staves of music for the Concert D-Flat Scale. The first staff shows the ascending scale from C2 to C3. The second staff shows the descending scale from C3 to C2. The key signature has four flats (B-flat, E-flat, A-flat, D-flat). The tempo is marked as quarter note = 120.

Concert G Scale

$\text{♩} = 120$

Two staves of music for the Concert G Scale. The first staff shows the ascending scale from C2 to C3. The second staff shows the descending scale from C3 to C2. The key signature has one sharp (F-sharp). The tempo is marked as quarter note = 120.

Chromatic Scale-Concert F to F

$\text{♩} = 120$

Three staves of music for the Chromatic Scale-Concert F to F. The first staff shows the ascending chromatic scale from F2 to F3. The second staff shows the descending chromatic scale from F3 to F2. The key signature has one flat (B-flat). The tempo is marked as quarter note = 120.

# IHSA Required Scales

## E-Flat Clarinet

All scales for wind instruments shall be played two octaves where applicable but one octave where range restricts.

Scales and the chromatic will be played from memory.

The scales listed, including the chromatic scale, will be called for in concert pitch and will be played two octaves, both up and down. This means that each player who plays a transposing instrument will have to transpose the given scale.

### Concert C Scale (your A Scale)

*♩ = 120*

### Concert F Scale (your D Scale)

*♩ = 120*

### Concert B-Flat Scale (your G Scale)

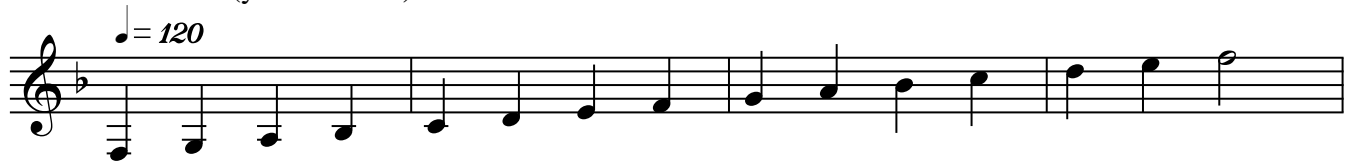
*♩ = 120*

### Concert E-Flat Scale (your C Scale)

*♩ = 120*

IHSA Required Scales

Concert A-Flat Scale (your F Scale)



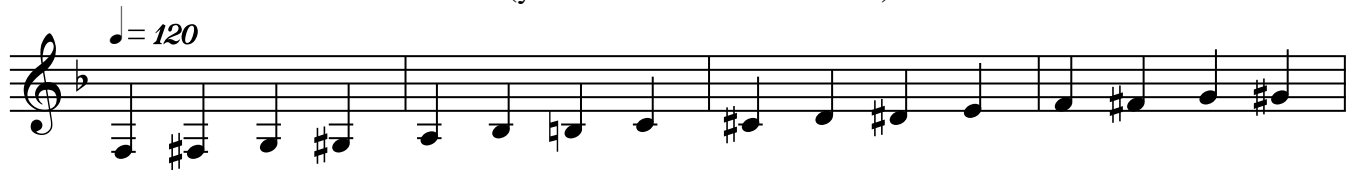
Concert D-Flat Scale (your B-flat Scale)



Concert G Scale (your E Scale)



Chromatic Scale-Concert A-Flat to A-Flat (your F to F Chromatic Scale)



# IHSA Required Scales

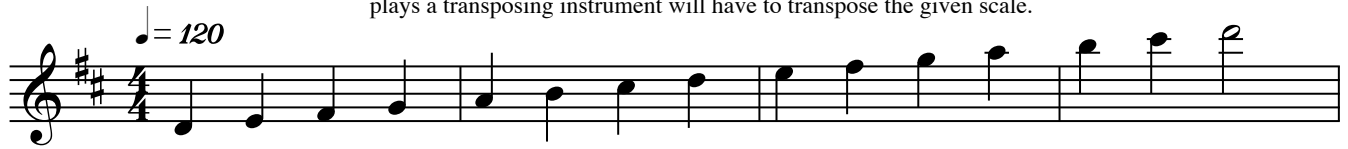
## B-Flat Clarinet

All scales for wind instruments shall be played two octaves where applicable but one octave where range restricts.

Scales and the chromatic will be played from memory.

The scales listed, including the chromatic scale, will be called for in concert pitch and will be played two octaves, both up and down. This means that each player who plays a transposing instrument will have to transpose the given scale.

### Concert C Scale (your D Scale)



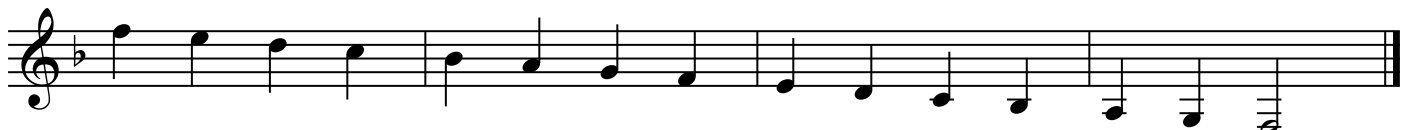
### Concert F Scale (your G Scale)



### Concert B-Flat Scale (your C Scale)



### Concert E-Flat Scale (your F Scale)



Concert A-Flat Scale (your B-Flat Scale)

*♩ = 120*

Concert D-Flat Scale (your E-Flat Scale)

*♩ = 120*

Concert G Scale (your A Scale)

*♩ = 120*

Chromatic Scale-Concert E-Flat to E-Flat (your F to F Chromatic Scale)

*♩ = 120*

# IHSA Required Scales

## E-Flat Alto Clarinet

All scales for wind instruments shall be played two octaves where applicable but one octave where range restricts. Scales and the chromatic will be played from memory. The scales listed, including the chromatic scale, will be called for in concert pitch and will be played two octaves, both up and down. This means that each player who plays a transposing instrument will have to transpose the given scale.

### Concert C Scale (your A Scale)

*♩ = 120*

### Concert F Scale (your D Scale)

*♩ = 120*

### Concert B-Flat Scale (your G Scale)

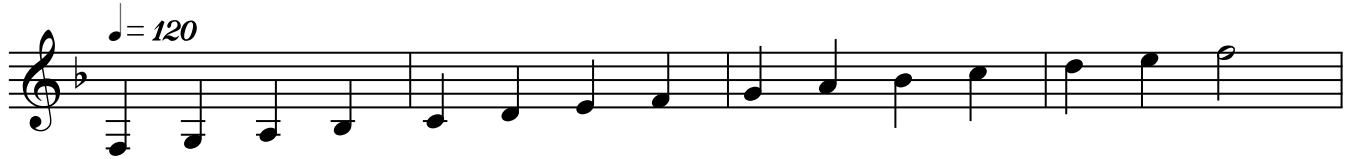
*♩ = 120*

### Concert E-Flat Scale (your C Scale)

*♩ = 120*

IHSA Required Scales

Concert A-Flat Scale (your F Scale)



Concert D-Flat Scale (your B-flat Scale)



Concert G Scale (your E Scale)



Chromatic Scale-Concert A-Flat to A-Flat (your F to F Chromatic Scale)





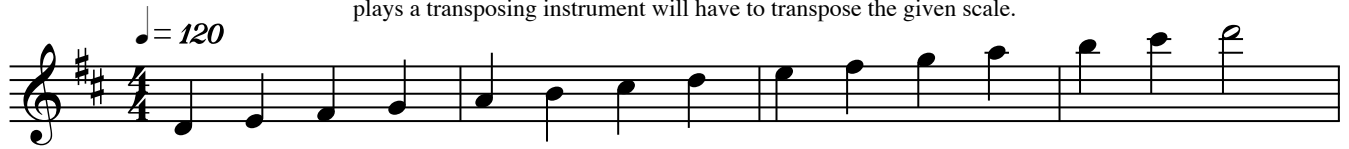
# IHSA Required Scales

## B-Flat Bass Clarinet

All scales for wind instruments shall be played two octaves where applicable but one octave where range restricts.

Scales and the chromatic will be played from memory.

Concert C Scale (your D Scale) and will be played two octaves, both up and down. This means that each player who plays a transposing instrument will have to transpose the given scale.



## Concert F Scale (your G Scale)



## Concert B-Flat Scale (your C Scale)



## Concert E-Flat Scale (your F Scale)



Concert A-Flat Scale (your B-Flat Scale)



Concert D-Flat Scale (your E-Flat Scale)



Concert G Scale (your A Scale)



Chromatic Scale-Concert E-Flat to E-Flat (your F to F Chromatic Scale)



# IHSA Required Scales

## E-Flat Contra Bass Clarinet

All scales for wind instruments shall be played two octaves where applicable but one octave where range restricts.

Scales and the chromatic will be played from memory.

The scales listed, including the chromatic scale, will be called for in concert pitch and will be played two octaves, both up and down. This means that each player who plays a transposing instrument will have to transpose the given scale.

### Concert C Scale (your A Scale)



### Concert F Scale (your D Scale)



### Concert B-Flat Scale (your G Scale)



### Concert E-Flat Scale (your C Scale)



IHSA Required Scales

Concert A-Flat Scale (your F Scale)

$\text{♩} = 120$

Concert D-Flat Scale (your B-flat Scale)

$\text{♩} = 120$

Concert G Scale (your E Scale)

$\text{♩} = 120$

Chromatic Scale-Concert A-Flat to A-Flat (your F to F Chromatic Scale)

$\text{♩} = 120$

# IHSA Required Scales

## B-Flat Soprano Saxophone

All scales for wind instruments shall be played two octaves where applicable but one octave where range restricts.

Scales and the chromatic will be played from memory.

The scales listed, including the chromatic scale, will be called for in concert pitch and will be played two octaves, both up and down. This means that each player who plays a transposing instrument will have to transpose the given scale.

### Concert C Scale (your D Scale)

*♩ = 120*

### Concert F Scale (your G Scale)

*♩ = 120*

### Concert B-Flat Scale (your C Scale)

*♩ = 120*

### Concert E-Flat Scale (your F Scale)

*♩ = 120*

Concert A-Flat Scale (your B-Flat Scale)

Concert D-Flat Scale (your E-Flat Scale)

Concert G Scale (your A Scale)

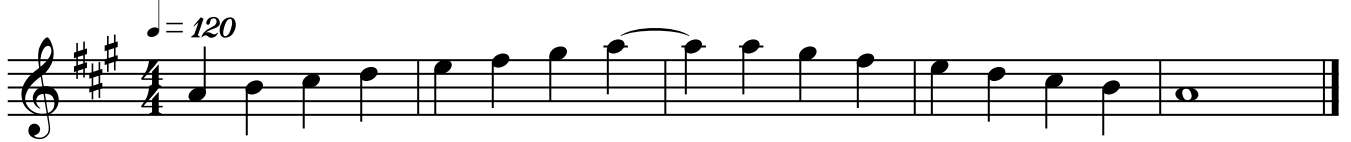
Chromatic Scale-Concert B-Flat to B-Flat (your C to C Chromatic Scale)

# IHSA Required Scales

## E-Flat Alto Saxophone

All scales for wind instruments shall be played two octaves where applicable but one octave where range restricts. Scales and the chromatic will be played from memory. The scales listed, including the chromatic scale, will be called for in concert pitch and will be played two octaves, both up and down. This means that each player who plays a transposing instrument will have to transpose the given scale.

### Concert C Scale (your A Scale)



### Concert F Scale (your D Scale)



### Concert B-Flat Scale (your G Scale)



### Concert E-Flat Scale (your C Scale)



# IHSA Required Scales

## Concert A-Flat Scale (your F Scale)

Musical notation for the Concert A-Flat Scale (your F Scale). The piece is in treble clef with a key signature of one flat (B-flat). The tempo is marked as quarter note = 120. The scale is written in two staves: the first staff shows the ascending scale from A-flat to G, and the second staff shows the descending scale from G to A-flat.

## Concert D-Flat Scale (your B-flat Scale)

Musical notation for the Concert D-Flat Scale (your B-flat Scale). The piece is in treble clef with a key signature of two flats (B-flat and E-flat). The tempo is marked as quarter note = 120. The scale is written in two staves: the first staff shows the ascending scale from D-flat to C, and the second staff shows the descending scale from C to D-flat.

## Concert G Scale (your E Scale)

Musical notation for the Concert G Scale (your E Scale). The piece is in treble clef with a key signature of three sharps (F#, C#, G#). The tempo is marked as quarter note = 120. The scale is written in two staves: the first staff shows the ascending scale from G to F#, and the second staff shows the descending scale from F# to G.

## Chromatic Scale-Concert F to F Chromatic Scale (your D to D Chromatic Scale)

Musical notation for the Chromatic Scale-Concert F to F Chromatic Scale (your D to D Chromatic Scale). The piece is in treble clef with a key signature of two sharps (F# and C#). The tempo is marked as quarter note = 120. The scale is written in three staves: the first staff shows the ascending chromatic scale from F to F#, the second staff shows the descending chromatic scale from F# to F, and the third staff shows the chromatic scale from F to F.



# Revised B-Flat Tenor Saxophone IHSA Scales

Concert C Scale (Your D Scale)

Two staves of music for the Concert C Scale (Your D Scale). The first staff shows the ascending scale: C4, D4, E4, F4, G4, A4, B4, C5. The second staff shows the descending scale: C5, B4, A4, G4, F4, E4, D4, C4. The key signature has two sharps (F# and C#) and the time signature is 4/4.

Concert F Scale (Your G Scale)

Two staves of music for the Concert F Scale (Your G Scale). The first staff shows the ascending scale: F4, G4, A4, B4, C5, B4, A4, G4, F4. The second staff shows the descending scale: F4, G4, A4, B4, C5, B4, A4, G4, F4. The key signature has one sharp (F#) and the time signature is 4/4.

Concert B-Flat Scale (Your C Scale)

Two staves of music for the Concert B-Flat Scale (Your C Scale). The first staff shows the ascending scale: Bb4, C5, D5, Eb5, F5, G5, Ab5, Bb5. The second staff shows the descending scale: Bb5, Ab5, G5, F5, Eb5, D5, C5, Bb4. The key signature has two flats (Bb and Eb) and the time signature is 4/4.

Concert E-Flat Scale (Your F Scale)

Two staves of music for the Concert E-Flat Scale (Your F Scale). The first staff shows the ascending scale: Eb4, F4, G4, Ab4, Bb4, C5, Bb4, Ab4, G4, F4, Eb4. The second staff shows the descending scale: Eb4, F4, G4, Ab4, Bb4, C5, Bb4, Ab4, G4, F4, Eb4. The key signature has three flats (Bb, Eb, and Ab) and the time signature is 4/4.

Concert A-Flat Scale (Your B-Flat Scale)

Two staves of music for the Concert A-Flat Scale (Your B-Flat Scale). The first staff shows the ascending scale: Ab4, Bb4, C5, Bb4, Ab4, G4, F4, Eb4, D4, C4, Ab4. The second staff shows the descending scale: Ab4, Bb4, C5, Bb4, Ab4, G4, F4, Eb4, D4, C4, Ab4. The key signature has three flats (Bb, Eb, and Ab) and the time signature is 4/4.

## Concert D-Flat Scale (Your E-Flat Scale)



## Concert G Scale (Your A Scale)



## Chromatic Scale - Concert Bb to Bb (your C to C Chromatic Scale)

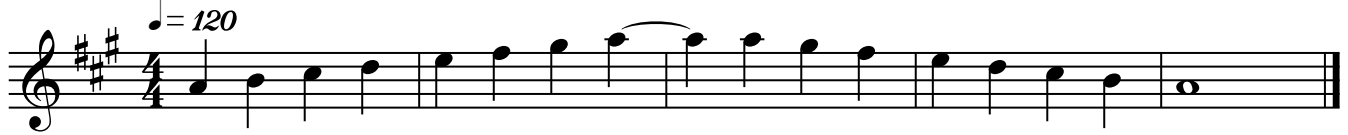


# IHSA Required Scales

## E-Flat Baritone Saxophone

All scales for wind instruments shall be played two octaves where applicable but one octave where range restricts. Scales and the chromatic will be played from memory. The scales listed, including the chromatic scale, will be called for in concert pitch and will be played two octaves, both up and down. This means that each player who plays a transposing instrument will have to transpose the given scale.

### Concert C Scale (your A Scale)



### Concert F Scale (your D Scale)



### Concert B-Flat Scale (your G Scale)



### Concert E-Flat Scale (your C Scale)



# IHSA Required Scales

## Concert A-Flat Scale (your F Scale)

Musical notation for the Concert A-Flat Scale (your F Scale). The scale is written in two staves. The first staff shows the ascending scale starting on A-flat (F) with a tempo marking of quarter note = 120. The second staff shows the descending scale ending on A-flat (F). The key signature has one flat (B-flat).

## Concert D-Flat Scale (your B-flat Scale)

Musical notation for the Concert D-Flat Scale (your B-flat Scale). The scale is written in two staves. The first staff shows the ascending scale starting on D-flat (B-flat) with a tempo marking of quarter note = 120. The second staff shows the descending scale ending on D-flat (B-flat). The key signature has two flats (B-flat and E-flat).

## Concert G Scale (your E Scale)

Musical notation for the Concert G Scale (your E Scale). The scale is written in two staves. The first staff shows the ascending scale starting on G with a tempo marking of quarter note = 120. The second staff shows the descending scale ending on G. The key signature has three sharps (F#, C#, G#).

## Chromatic Scale-Concert F to F Chromatic Scale (your D to D Chromatic Scale)

Musical notation for the Chromatic Scale-Concert F to F Chromatic Scale (your D to D Chromatic Scale). The scale is written in three staves. The first staff shows the ascending chromatic scale starting on F with a tempo marking of quarter note = 120. The second staff shows the descending chromatic scale ending on F. The key signature has three sharps (F#, C#, G#).

# Revised

## B-Flat Trumpet, Cornet, Treble Clef Baritone IHSA Scales

Concert C Scale (Your D Scale)



Concert F Scale (Your G Scale)



Concert B-Flat Scale (Your C Scale)



Concert E-Flat Scale (Your F Scale)



Concert A-Flat Scale (Your B-Flat Scale)



Concert D-Flat Scale (Your E-Flat Scale)



Concert G Scale (Your A Scale)



# IHSA Required Scales

## French Horn

All scales for wind instruments shall be played two octaves where applicable but one octave where range restricts.

Scales and the chromatic will be played from memory.

The scales listed, including the chromatic scale, will be called for in concert pitch

and will be played two octaves, both up and down. This means that each player who plays a transposing instrument will have to transpose the given scale.

### Concert C Scale (your G Scale)

*♩ = 120*

### Concert F Scale (your C Scale)

*♩ = 120*

### Concert B-Flat Scale (your F Scale)

*♩ = 120*

### Concert E-Flat Scale (your B-Flat Scale)

*♩ = 120*

IHSA Required Scales

Concert A-Flat Scale (your E-Flat Scale)

$\text{♩} = 120$

Concert D-Flat Scale (your A-Flat Scale)

$\text{♩} = 120$

Concert G Scale (your D Scale)

$\text{♩} = 120$

Chromatic Scale-Concert C to C (your G to G Chromatic)

$\text{♩} = 120$



# IHSA Required Scales

## Trombone Baritone B.C.

### Concert C Scale

All scales for wind instruments shall be played two octaves where applicable but one octave where range restricts. Scales and the chromatic will be played from memory. The scales listed, including the chromatic scale, will be called for in concert pitch and will be played two octaves, both up and down. This means that each player who plays a transposing instrument will have to transpose the given scale.

$\text{♩} = 120$

Concert C Scale

### Concert F Scale

$\text{♩} = 120$

Concert F Scale

### Concert B-Flat Scale

$\text{♩} = 120$

Concert B-Flat Scale

### Concert E-Flat Scale

$\text{♩} = 120$

Concert E-Flat Scale

IHSA Required Scales

Concert A-Flat Scale

$\text{♩} = 120$

Two staves of music for the Concert A-Flat Scale. The first staff shows the ascending scale from A-flat to A-flat. The second staff shows the descending scale from A-flat to A-flat. The key signature has three flats (B-flat, E-flat, A-flat).

Concert D-Flat Scale

$\text{♩} = 120$

Two staves of music for the Concert D-Flat Scale. The first staff shows the ascending scale from D-flat to D-flat. The second staff shows the descending scale from D-flat to D-flat. The key signature has four flats (B-flat, E-flat, A-flat, D-flat).

Concert G Scale

$\text{♩} = 120$

Two staves of music for the Concert G Scale. The first staff shows the ascending scale from G to G. The second staff shows the descending scale from G to G. The key signature has one sharp (F-sharp).

Chromatic Scale-Concert F to F

$\text{♩} = 120$

Three staves of music for the Chromatic Scale-Concert F to F. The first staff shows the ascending chromatic scale from F to F. The second staff shows the descending chromatic scale from F to F. The key signature has one flat (B-flat).

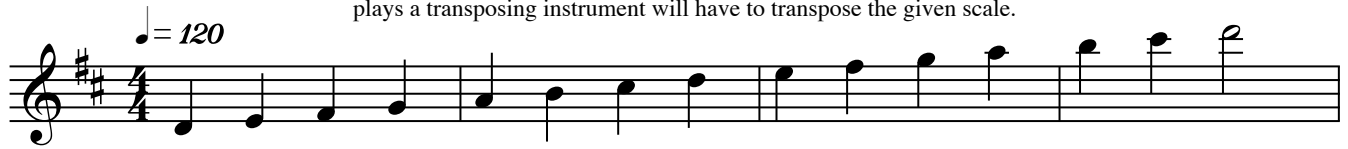
# IHSA Required Scales

## B-Flat Trumpet, Cornet Treble Clef Baritone

All scales for wind instruments shall be played two octaves where applicable but one octave where range restricts. Scales and the chromatic will be played from memory.

### Concert C Scale (your D Scale)

The scales listed, including the chromatic scale, will be called for in concert pitch and will be played two octaves, both up and down. This means that each player who plays a transposing instrument will have to transpose the given scale.



### Concert F Scale (your G Scale)



### Concert B-Flat Scale (your C Scale)



### Concert E-Flat Scale (your F Scale)



Concert A-Flat Scale (your B-Flat Scale)

Musical notation for the Concert A-Flat Scale (your B-Flat Scale). The scale is written on a single staff in treble clef with a key signature of two flats (B-flat and E-flat). The tempo marking is quarter note = 120. The scale consists of 11 notes: A-flat, B-flat, C, D, E-flat, F, G, A, B-flat, C, and D. The first line shows the ascending scale, and the second line shows the descending scale.

Concert D-Flat Scale (your E-Flat Scale)

Musical notation for the Concert D-Flat Scale (your E-Flat Scale). The scale is written on a single staff in treble clef with a key signature of three flats (B-flat, E-flat, and A-flat). The tempo marking is quarter note = 120. The scale consists of 11 notes: D-flat, E-flat, F, G, A-flat, B-flat, C, D, E-flat, F, and G. The first line shows the ascending scale, and the second line shows the descending scale.

Concert G Scale (your A Scale)

Musical notation for the Concert G Scale (your A Scale). The scale is written on a single staff in treble clef with a key signature of two sharps (F# and C#). The tempo marking is quarter note = 120. The scale consists of 11 notes: G, A, B, C, D, E, F#, G, A, B, and C. The first line shows the ascending scale, and the second line shows the descending scale.

Chromatic Scale-Concert F to F (your G to G Chromatic Scale)

Musical notation for the Chromatic Scale-Concert F to F (your G to G Chromatic Scale). The scale is written on three staves in treble clef with a key signature of one sharp (F#). The tempo marking is quarter note = 120. The scale consists of 24 notes: F, F#, G, G#, A, A#, B, B#, C, C#, D, D#, E, E#, F, F#, G, G#, A, A#, B, B#, and C. The first line shows the ascending scale, the second line shows the descending scale, and the third line shows the ascending scale.

# IHSA Required Scales

## BB Flat Tuba

All scales for wind instruments shall be played two octaves where applicable but one octave where range restricts.

Scales and the chromatic will be played from memory.

The scales listed, including the chromatic scale, will be called for in concert pitch and will be played two octaves, both up and down. This means that each player who plays a transposing instrument will have to transpose the given scale.

### Concert C Scale

$\text{♩} = 120$

The Concert C Scale is written in 4/4 time with a tempo of 120 beats per minute. The scale is written in bass clef on a single staff, starting on C2 and ending on C3. The notes are: C2, D2, E2, F2, G2, A2, B2, C3.

### Concert F Scale

$\text{♩} = 120$

The Concert F Scale is written in 4/4 time with a tempo of 120 beats per minute. The scale is written in bass clef on a single staff, starting on F2 and ending on F3. The notes are: F2, G2, A2, B2, C3, D3, E3, F3.

### Concert B-Flat Scale

$\text{♩} = 120$

The Concert B-Flat Scale is written in 4/4 time with a tempo of 120 beats per minute. The scale is written in bass clef on a single staff, starting on Bb2 and ending on Bb3. The notes are: Bb2, C3, D3, Eb3, F3, G3, Ab3, Bb3.

### Concert E-Flat Scale

$\text{♩} = 120$

The Concert E-Flat Scale is written in 4/4 time with a tempo of 120 beats per minute. The scale is written in bass clef on a single staff, starting on Eb2 and ending on Eb3. The notes are: Eb2, F2, G2, Ab2, Bb2, C3, D3, Eb3.

IHSA Required Scales

Concert A-Flat Scale

*♩ = 120*

Two staves of musical notation for the Concert A-Flat Scale. The first staff shows the ascending scale from A-flat to G, and the second staff shows the descending scale from G to A-flat. The key signature has three flats (B-flat, E-flat, A-flat).

Concert D-Flat Scale

*♩ = 120*

Two staves of musical notation for the Concert D-Flat Scale. The first staff shows the ascending scale from D-flat to C, and the second staff shows the descending scale from C to D-flat. The key signature has four flats (B-flat, E-flat, A-flat, D-flat).

Concert G Scale

*♩ = 120*

Two staves of musical notation for the Concert G Scale. The first staff shows the ascending scale from G to G, and the second staff shows the descending scale from G to G. The key signature has one sharp (F-sharp).

Chromatic Scale-Concert F to F

*♩ = 120*

Three staves of musical notation for the Chromatic Scale-Concert F to F. The first staff shows the ascending chromatic scale from F to F, the second staff shows the descending chromatic scale from F to F, and the third staff shows the chromatic scale from F to F with a key signature change to one flat (B-flat).

# IHSA Required Scales

## E-Flat Tuba

All scales for wind instruments shall be played two octaves where applicable but one octave where range restricts.

Scales and the chromatic will be played from memory.

The scales listed, including the chromatic scale, will be called for in concert pitch and will be played two octaves, both up and down. This means that each player who plays a transposing instrument will have to transpose the given scale.

### Concert C Scale

$\text{♩} = 120$

Two staves of musical notation for the Concert C Scale in 4/4 time. The first staff shows the scale ascending from C2 to C3. The second staff shows the scale descending from C3 to C2. The tempo is marked as quarter note = 120.

### Concert F Scale

$\text{♩} = 120$

Two staves of musical notation for the Concert F Scale in 4/4 time. The first staff shows the scale ascending from F2 to F3. The second staff shows the scale descending from F3 to F2. The tempo is marked as quarter note = 120.

### Concert B-Flat Scale

$\text{♩} = 120$

Two staves of musical notation for the Concert B-Flat Scale in 4/4 time. The first staff shows the scale ascending from B-flat2 to B-flat3. The second staff shows the scale descending from B-flat3 to B-flat2. The tempo is marked as quarter note = 120.

### Concert E-Flat Scale

$\text{♩} = 120$

Two staves of musical notation for the Concert E-Flat Scale in 4/4 time. The first staff shows the scale ascending from E-flat2 to E-flat3. The second staff shows the scale descending from E-flat3 to E-flat2. The tempo is marked as quarter note = 120.

IHSA Required Scales

Concert A-Flat Scale

$\text{♩} = 120$

The musical notation for the Concert A-Flat Scale is written on a single bass clef staff. It begins with a key signature of three flats (B-flat, E-flat, A-flat) and a tempo marking of quarter note = 120. The scale consists of 11 notes: A-flat, B-flat, C, D, E-flat, F, G, A-flat, B-flat, C, and D. The notes are written as quarter notes, with a final half note D.

Concert D-Flat Scale

$\text{♩} = 120$

The musical notation for the Concert D-Flat Scale is written on a single bass clef staff. It begins with a key signature of four flats (B-flat, E-flat, A-flat, D-flat) and a tempo marking of quarter note = 120. The scale consists of 11 notes: D-flat, E-flat, F, G, A-flat, B-flat, C, D-flat, E-flat, F, and G. The notes are written as quarter notes, with a final half note G.

Concert G Scale

$\text{♩} = 120$

The musical notation for the Concert G Scale is written on a single bass clef staff. It begins with a key signature of one sharp (F-sharp) and a tempo marking of quarter note = 120. The scale consists of 11 notes: G, A, B, C, D, E, F-sharp, G, A, B, and C. The notes are written as quarter notes, with a final half note C.

Chromatic Scale-Concert F to F

$\text{♩} = 120$

The musical notation for the Chromatic Scale-Concert F to F is written on a single bass clef staff. It begins with a key signature of two flats (B-flat, E-flat) and a tempo marking of quarter note = 120. The scale consists of 24 notes, starting on F and ending on F. The notes are written as quarter notes, with a final half note F.



**Vibraharp  
Xylophone  
Marimba**

# IHSA Required Scales

All scales for wind instruments shall be played two octaves where applicable but one octave where range restricts.

Scales and the chromatic will be played from memory.

The scales listed, including the chromatic scale, will be called for in concert pitch and will be played two octaves, both up and down. This means that each player who plays a transposing instrument will have to transpose the given scale.

## Concert C Scale

$\text{♩} = 120$

The Concert C Scale is written on a treble clef staff in 4/4 time. The tempo is marked as quarter note = 120. The ascending scale consists of the notes C4, D4, E4, F4, G4, A4, B4, and C5. The descending scale consists of the notes C5, B4, A4, G4, F4, E4, D4, and C4. The piece ends with a double bar line.

## Concert F Scale

$\text{♩} = 120$

The Concert F Scale is written on a treble clef staff in 4/4 time. The key signature has one flat (B-flat). The tempo is marked as quarter note = 120. The ascending scale consists of the notes F4, G4, A4, B-flat4, C5, D5, E5, and F5. The descending scale consists of the notes F5, E5, D5, C5, B-flat4, A4, G4, and F4. The piece ends with a double bar line.

## Concert B-Flat Scale

$\text{♩} = 120$

The Concert B-Flat Scale is written on a treble clef staff in 4/4 time. The key signature has two flats (B-flat and E-flat). The tempo is marked as quarter note = 120. The ascending scale consists of the notes B-flat4, C5, D5, E-flat5, F5, G5, A5, and B-flat5. The descending scale consists of the notes B-flat5, A5, G5, F5, E-flat5, D5, C5, and B-flat4. The piece ends with a double bar line.

## Concert E-Flat Scale

$\text{♩} = 120$

The Concert E-Flat Scale is written on a treble clef staff in 4/4 time. The key signature has three flats (B-flat, E-flat, and A-flat). The tempo is marked as quarter note = 120. The ascending scale consists of the notes E-flat4, F4, G4, A-flat4, B-flat4, C5, D5, and E-flat5. The descending scale consists of the notes E-flat5, D5, C5, B-flat4, A-flat4, G4, F4, and E-flat4. The piece ends with a double bar line.

IHSA Required Scales

Concert A-Flat Scale

*♩ = 120*

Musical notation for the Concert A-Flat Scale, consisting of two staves. The first staff shows the ascending scale from A-flat to A-flat. The second staff shows the descending scale from A-flat to A-flat. The key signature has three flats (B-flat, E-flat, A-flat).

Concert D-Flat Scale

*♩ = 120*

Musical notation for the Concert D-Flat Scale, consisting of two staves. The first staff shows the ascending scale from D-flat to D-flat. The second staff shows the descending scale from D-flat to D-flat. The key signature has four flats (B-flat, E-flat, A-flat, D-flat).

Concert G Scale

*♩ = 120*

Musical notation for the Concert G Scale, consisting of two staves. The first staff shows the ascending scale from G to G. The second staff shows the descending scale from G to G. The key signature has one sharp (F#).

Chromatic Scale-Concert C to C

*♩ = 120*

Musical notation for the Chromatic Scale-Concert C to C, consisting of three staves. The first staff shows the ascending chromatic scale from C to C with fingerings: L R L R L R L R L R L R L R. The second staff shows the descending chromatic scale from C to C with fingerings: L R L R L R L R L R L R L R. The third staff shows the descending chromatic scale from C to C with fingerings: R L R L R L R L R L R L R L R.

## Glockenspiel Bells

# IHSA Required Scales

All scales for wind instruments shall be played two octaves where applicable but one octave where range restricts.

Scales and the chromatic will be played from memory.

The scales listed, including the chromatic scale, will be called for in concert pitch and will be played two octaves, both up and down. This means that each player who plays a transposing instrument will have to transpose the given scale.

### Concert C Scale

$\text{♩} = 120$

The Concert C Scale is written in treble clef with a 4/4 time signature. The tempo is marked as quarter note = 120. The scale consists of two staves. The first staff shows the ascending scale from middle C (C4) to the G above (G5). The second staff shows the descending scale from G5 back to middle C (C4).

### Concert F Scale

$\text{♩} = 120$

The Concert F Scale is written in treble clef with a key signature of one flat (B-flat) and a 4/4 time signature. The tempo is marked as quarter note = 120. The scale consists of two staves. The first staff shows the ascending scale from F4 to F5. The second staff shows the descending scale from F5 back to F4.

### Concert B-Flat Scale

$\text{♩} = 120$

The Concert B-Flat Scale is written in treble clef with a key signature of two flats (B-flat and E-flat) and a 4/4 time signature. The tempo is marked as quarter note = 120. The scale consists of two staves. The first staff shows the ascending scale from B-flat4 to B-flat5. The second staff shows the descending scale from B-flat5 back to B-flat4.

### Concert E-Flat Scale

$\text{♩} = 120$

The Concert E-Flat Scale is written in treble clef with a key signature of three flats (B-flat, E-flat, and A-flat) and a 4/4 time signature. The tempo is marked as quarter note = 120. The scale consists of two staves. The first staff shows the ascending scale from E-flat4 to E-flat5. The second staff shows the descending scale from E-flat5 back to E-flat4.

IHSA Required Scales

Concert A-Flat Scale

*♩ = 120*

The Concert A-Flat Scale is written in treble clef with a key signature of three flats (B-flat, E-flat, A-flat). The tempo is marked as quarter note = 120. The scale consists of two lines of music: the first line shows the ascending scale from A-flat to G, and the second line shows the descending scale from G to A-flat.

Concert D-Flat Scale

*♩ = 120*

The Concert D-Flat Scale is written in treble clef with a key signature of four flats (B-flat, E-flat, A-flat, D-flat). The tempo is marked as quarter note = 120. The scale consists of two lines of music: the first line shows the ascending scale from D-flat to C, and the second line shows the descending scale from C to D-flat.

Concert G Scale

*♩ = 120*

The Concert G Scale is written in treble clef with a key signature of one sharp (F-sharp). The tempo is marked as quarter note = 120. The scale consists of two lines of music: the first line shows the ascending scale from G to G, and the second line shows the descending scale from G to G.

Chromatic Scale-Concert C to C

*♩ = 120*

The Chromatic Scale-Concert C to C is written in treble clef. The tempo is marked as quarter note = 120. The scale consists of three lines of music: the first line shows the ascending chromatic scale from C to C with fingerings L R L R L R L R L R L R L R; the second line shows the descending chromatic scale from C to C with fingerings L R L R L R L R L R L R L R; the third line shows the descending chromatic scale from C to C with fingerings R L R L R L R L R L R L R L R.

# IHSA Required Scales

## Timpani

Play a one octave scale in F major in half notes up and down.  
The judge will ask the soloist to tune two intervals from the following.  
The low pitch will be given and the soloist will then tune the interval.

Tune these intervals

C D Ab Eb G C

4

F C Bb F Db Ab

## Concert F Scale

7

F G A Bb C D E F

11

# IHSA Required Percussion Rudiments

In addition to a prepared solo, all percussion (non-mallet) soloists must play one rudiment from each group per the judges selection.

## I. Roll Rudiments - Play one from this group

4. Multiple Bounce Roll

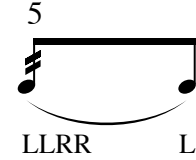
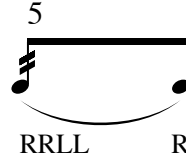


6. Double Stroke Open Roll



RRLRRL  
LLRLLRR

7. Five Stroke Roll

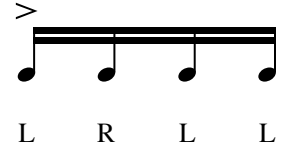
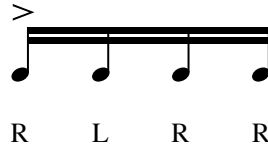


10. Nine Stroke Roll

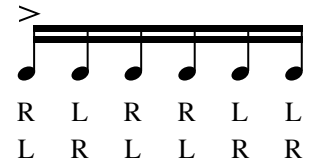
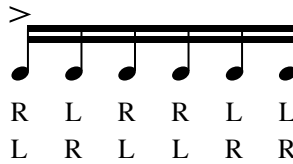


## II. Diddle Rudiments - Play one from this group

16. Single Paradiddle



19. Single Paradiddle-diddle

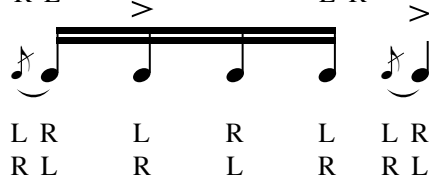


## III. Flam Rudiments - Play one from this group

20. Flam



23. Flamacue

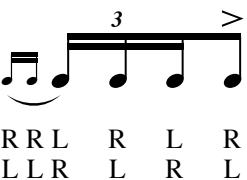
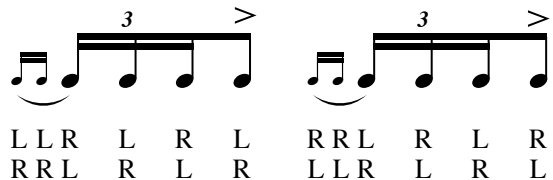


## IV. Drag Rudiments - Play one from this group

31. Drag



38. Single Ratamacue



Note: The numbers listed next to the rudiments have been taken from the PAS recognized 40 rudiments.

# IHSA Required Scales

## Violin

All string soloists will play two scales, three octaves in range, except for the string base which will play two octaves. Scales will be played from memory. The scales listed, will be called for in concert pitch and will be played three octaves, both up and down.

### Concert C Scale

The Concert C Scale is written in 4/4 time with a tempo marking of 120. It is presented in two staves. The first staff shows the ascending scale from middle C (C4) to C6. The second staff shows the descending scale from C6 to C4. The notes are: C4, D4, E4, F4, G4, A4, B4, C5, D5, E5, F5, G5, A5, B5, C6 (ascending); C6, B5, A5, G5, F5, E5, D5, C5, B4, A4, G4, F4, E4, D4, C4 (descending).

### Concert G Scale

The Concert G Scale is written in 4/4 time with a tempo marking of 120. It is presented in two staves. The first staff shows the ascending scale from G4 to G6. The second staff shows the descending scale from G6 to G4. The notes are: G4, A4, B4, C5, D5, E5, F#5, G5, A5, B5, C6, D6, E6, F#6, G6 (ascending); G6, F#6, E6, D6, C6, B5, A5, G5, F#5, E5, D5, C5, B4, A4, G4 (descending).

### Concert D Scale

The Concert D Scale is written in 4/4 time with a tempo marking of 120. It is presented in two staves. The first staff shows the ascending scale from D4 to D6. The second staff shows the descending scale from D6 to D4. The notes are: D4, E4, F#4, G4, A4, B4, C#5, D5, E5, F#5, G5, A5, B5, C#6, D6 (ascending); D6, C#6, B5, A5, G5, F#5, E5, D5, C#5, B4, A4, G4, F#4, E4, D4 (descending).

### Concert A Scale

The Concert A Scale is written in 4/4 time with a tempo marking of 120. It is presented in two staves. The first staff shows the ascending scale from A4 to A6. The second staff shows the descending scale from A6 to A4. The notes are: A4, B4, C#5, D5, E5, F#5, G#5, A5, B5, C#6, D6, E6, F#6, G#6, A6 (ascending); A6, G#6, F#6, E6, D6, C#6, B5, A5, G#5, F#5, E5, D5, C#5, B4, A4 (descending).

IHSA Required Scales

Concert E Scale

The Concert E Scale is written in treble clef with a key signature of three sharps (F#, C#, G#). The tempo marking is quarter note = 120. The scale is presented in two staves: the first staff shows the ascending scale from E4 to E5, and the second staff shows the descending scale from E5 to E4. The notes are: E4, F#4, G#4, A4, B4, C#5, D5, E5 (ascending); E5, D5, C#5, B4, A4, G#4, F#4, E4 (descending).

Concert F Scale

The Concert F Scale is written in treble clef with a key signature of one flat (Bb). The tempo marking is quarter note = 120. The scale is presented in two staves: the first staff shows the ascending scale from F4 to F5, and the second staff shows the descending scale from F5 to F4. The notes are: F4, G4, A4, Bb4, C5, D5, E5, F5 (ascending); F5, E5, D5, C5, Bb4, A4, G4, F4 (descending).



# IHSA Required Scales

## Viola

All string soloists will play two scales, three octaves in range, except for the string base which will play two octaves. Scales will be played from memory. The scales listed, will be called for in concert pitch and will be played three octaves, both up and down.

### Concert C Scale

$\text{♩} = 120$

7

The Concert C Scale is written in 4/4 time with a tempo of 120 beats per minute. It consists of two staves. The first staff contains measures 1 through 6, and the second staff contains measures 7 through 12. The scale is played in concert pitch, starting on middle C (C4) and ascending to C6, then descending back to C4.

### Concert G Scale

12  $\text{♩} = 120$

18

The Concert G Scale is written in 4/4 time with a tempo of 120 beats per minute. It consists of two staves. The first staff contains measures 13 through 17, and the second staff contains measures 18 through 22. The scale is played in concert pitch, starting on G4 and ascending to G6, then descending back to G4.

### Concert D Scale

23  $\text{♩} = 120$

29

The Concert D Scale is written in 4/4 time with a tempo of 120 beats per minute. It consists of two staves. The first staff contains measures 24 through 28, and the second staff contains measures 29 through 33. The scale is played in concert pitch, starting on D4 and ascending to D6, then descending back to D4.

### Concert A Scale

34  $\text{♩} = 120$

40

The Concert A Scale is written in 4/4 time with a tempo of 120 beats per minute. It consists of two staves. The first staff contains measures 35 through 39, and the second staff contains measures 40 through 44. The scale is played in concert pitch, starting on A4 and ascending to A6, then descending back to A4.

IHSA Required Scales

Concert E Scale

45  $\text{♩} = 120$

Musical notation for the first part of the Concert E Scale, measures 45-50. The key signature is E major (three sharps: F#, C#, G#). The scale begins on E4 and ascends to E5. The notation is in bass clef with a 2/4 time signature. The first five measures show the ascending scale, and the sixth measure shows the final E5 note.

51

Musical notation for the second part of the Concert E Scale, measures 51-55. The scale descends from E5 to E4. The notation is in bass clef with a 2/4 time signature. The first five measures show the descending scale, and the sixth measure shows the final E4 note.

Concert F Scale

56  $\text{♩} = 120$

Musical notation for the first part of the Concert F Scale, measures 56-61. The key signature is F major (one flat: Bb). The scale begins on F4 and ascends to F5. The notation is in bass clef with a 2/4 time signature. The first five measures show the ascending scale, and the sixth measure shows the final F5 note.

62

Musical notation for the second part of the Concert F Scale, measures 62-66. The scale descends from F5 to F4. The notation is in bass clef with a 2/4 time signature. The first five measures show the descending scale, and the sixth measure shows the final F4 note.

# IHSA Required Scales

## Cello

All string soloists will play two scales, three octaves in range, except for the string base which will play two octaves. Scales will be played from memory. The scales listed, will be called for in concert pitch and will be played three octaves, both up and down.

### Concert C Scale

$\text{♩} = 120$

Concert C Scale

### Concert G Scale

$\text{♩} = 120$

Concert G Scale

### Concert D Scale

$\text{♩} = 120$

Concert D Scale

### Concert A Scale

$\text{♩} = 120$

Concert A Scale

IHSA Required Scales

Concert E Scale

$\text{♩} = 120$

Concert E Scale

Concert F Scale

$\text{♩} = 120$

Concert F Scale

# IHSA Required Scales

**String Bass** All string soloists will play two scales, three octaves in range, except for the string base which will play two octaves.  
Scales will be played from memory.  
The scales listed, will be called for in concert pitch and will be played two octaves, both up and down.

## Concert C Scale

$\text{♩} = 120$

Musical notation for the Concert C Scale in bass clef, 4/4 time. The scale is written in two staves. The first staff shows the ascending scale from C2 to C4. The second staff shows the descending scale from C4 to C2. The tempo is marked as quarter note = 120.

## Concert G Scale

$\text{♩} = 120$

Musical notation for the Concert G Scale in bass clef, 4/4 time. The scale is written in two staves. The first staff shows the ascending scale from G2 to G4. The second staff shows the descending scale from G4 to G2. The tempo is marked as quarter note = 120.

## Concert D Scale

$\text{♩} = 120$

Musical notation for the Concert D Scale in bass clef, 4/4 time. The scale is written in two staves. The first staff shows the ascending scale from D2 to D4. The second staff shows the descending scale from D4 to D2. The tempo is marked as quarter note = 120.

## Concert A Scale

$\text{♩} = 120$

Musical notation for the Concert A Scale in bass clef, 4/4 time. The scale is written in two staves. The first staff shows the ascending scale from A2 to A4. The second staff shows the descending scale from A4 to A2. The tempo is marked as quarter note = 120.

IHSA Required Scales

Concert E Scale

$\text{♩} = 120$

The Concert E Scale is presented in bass clef with a key signature of one sharp (F#). The tempo is indicated as quarter note = 120. The scale is written across two staves. The first staff shows the ascending scale from E2 to E3. The second staff shows the descending scale from E3 to E2.

Concert F Scale

$\text{♩} = 120$

The Concert F Scale is presented in bass clef with a key signature of one flat (Bb). The tempo is indicated as quarter note = 120. The scale is written across two staves. The first staff shows the ascending scale from F2 to F3. The second staff shows the descending scale from F3 to F2.

# IHSA Required Scales

## Harp

All string soloists will play two scales, three octaves in range, except for the string base which will play two octaves. Scales will be played from memory. The scales listed, will be called for in concert pitch and will be played three octaves, both up and down.

### Concert C Scale

Musical notation for the Concert C Scale in 4/4 time, tempo 120. The scale is written in treble clef and consists of two staves. The first staff shows the scale ascending from C4 to C5, and the second staff shows the scale descending from C5 to C4. The tempo is indicated as 120.

### Concert G Scale

Musical notation for the Concert G Scale in 4/4 time, tempo 120. The scale is written in treble clef with one sharp (F#) and consists of two staves. The first staff shows the scale ascending from G4 to G5, and the second staff shows the scale descending from G5 to G4. The tempo is indicated as 120.

### Concert D Scale

Musical notation for the Concert D Scale in 4/4 time, tempo 120. The scale is written in treble clef with two sharps (F# and C#) and consists of two staves. The first staff shows the scale ascending from D4 to D5, and the second staff shows the scale descending from D5 to D4. The tempo is indicated as 120.

### Concert A Scale

Musical notation for the Concert A Scale in 4/4 time, tempo 120. The scale is written in treble clef with three sharps (F#, C#, and G#) and consists of two staves. The first staff shows the scale ascending from A4 to A5, and the second staff shows the scale descending from A5 to A4. The tempo is indicated as 120.

IHSA Required Scales

Concert E Scale

*♩ = 120*

The Concert E Scale is written in treble clef with a key signature of three sharps (F#, C#, G#). The tempo is marked as quarter note = 120. The scale consists of two staves. The first staff shows the ascending scale from E4 to E5. The second staff shows the descending scale from E5 to E4. Each note is accompanied by a harp fingering diagram showing the placement of fingers on the strings.

Concert F Scale

*♩ = 120*

The Concert F Scale is written in treble clef with a key signature of one flat (Bb). The tempo is marked as quarter note = 120. The scale consists of two staves. The first staff shows the ascending scale from F4 to F5. The second staff shows the descending scale from F5 to F4. Each note is accompanied by a harp fingering diagram showing the placement of fingers on the strings.



# IHSA Required Scales

Acoustic/Classic Guitar

Concert C Major Scale - 1st Position

Guitar



Musical notation for the Concert C Major Scale in 1st position, 4/4 time. The tempo is marked as quarter note = 120. The scale is written on a single treble clef staff. The notes are: C4, D4, E4, F4, G4, A4, B4, C5, B4, A4, G4, F4, E4, D4, C4.

Concert a minor Scale - 1st Position



Musical notation for the Concert a minor Scale in 1st position, 4/4 time. The tempo is marked as quarter note = 120. The scale is written on a single treble clef staff. The notes are: A3, B3, C4, D4, E4, F4, G4, A4, B4, A4, G4, F4, E4, D4, C4, B3, A3.

Concert G Major Scale - 1st Position



Musical notation for the Concert G Major Scale in 1st position, 4/4 time. The tempo is marked as quarter note = 120. The key signature has one sharp (F#). The scale is written on a single treble clef staff. The notes are: G3, A3, B3, C4, D4, E4, F#4, G4, A4, B4, A4, G4, F#4, E4, D4, C4, B3, A3, G3.

Concert e minor Scale - 1st Position



Musical notation for the Concert e minor Scale in 1st position, 4/4 time. The tempo is marked as quarter note = 120. The key signature has one sharp (F#). The scale is written on a single treble clef staff. The notes are: E3, F#3, G3, A3, B3, C4, D4, E4, F#4, G4, A4, B4, A4, G4, F#4, E4, D4, C4, B3, A3, G3, F#3, E3.

Concert A Major Scale - 1st Position



Musical notation for the Concert A Major Scale in 1st position, 4/4 time. The tempo is marked as quarter note = 120. The key signature has three sharps (F#, C#, G#). The scale is written on a single treble clef staff. The notes are: A3, B3, C#4, D4, E4, F#4, G#4, A4, B4, C#5, B4, A4, G#4, F#4, E4, D4, C#4, B3, A3.



Musical notation for the Concert A Major Scale in 1st position, 4/4 time. The tempo is marked as quarter note = 120. The key signature has three sharps (F#, C#, G#). The scale is written on a single treble clef staff. The notes are: A3, B3, C#4, D4, E4, F#4, G#4, A4, B4, C#5, B4, A4, G#4, F#4, E4, D4, C#4, B3, A3.

Concert f# minor Scale - 1st Position

Musical notation for the Concert f# minor Scale in 1st position. The scale is written on a single treble clef staff with a key signature of three sharps (F#, C#, G#). The tempo is marked as quarter note = 120. The scale consists of two lines of music: the first line shows the ascending scale from F# to D, and the second line shows the descending scale from D to F#.

Concert E Major - Play in 1st Position, 4th Position, and 9th Position

Musical notation for the Concert E Major Scale. The scale is written on a single treble clef staff with a key signature of three sharps (F#, C#, G#). The tempo is marked as quarter note = 120. The scale consists of two lines of music: the first line shows the ascending scale from E to B, and the second line shows the descending scale from B to E.

Concert F Major - Play in 1st Position, 5th Position, and 10th Position

Musical notation for the Concert F Major Scale. The scale is written on a single treble clef staff with a key signature of one flat (Bb). The tempo is marked as quarter note = 120. The scale consists of two lines of music: the first line shows the ascending scale from F to C, and the second line shows the descending scale from C to F.

Chromatic Scale E to A in 1st Position two octave movable in A - A; B - B; or C - C.

Musical notation for the Chromatic Scale E to A. The scale is written on a single treble clef staff with a key signature of one flat (Bb). The tempo is marked as quarter note = 120. The scale consists of three lines of music: the first line shows the ascending chromatic scale from E to A, the second line shows the descending chromatic scale from A to E, and the third line shows the descending chromatic scale from A to E.

# IHSA Required Scales

## Piano

Piano soloists will be required also to play three of the following scales:  
Concert G, D, A, E, B or F  
two octaves, with both hands.

### Concert G Scale

Musical notation for the first two measures of the Concert G Scale. The piece is in G major (one sharp) and 4/4 time. The tempo is marked as quarter note = 120. The first measure contains the notes G4, A4, B4, C5 in the treble clef and G3, A3, B3, C4 in the bass clef. The second measure contains the notes D5, E5, F#5, G5 in the treble clef and D4, E4, F#4, G4 in the bass clef.

Musical notation for the last two measures of the Concert G Scale. The third measure contains the notes G5, F#5, E5, D5 in the treble clef and G4, F#4, E4, D4 in the bass clef. The fourth measure contains the notes C5, B4, A4, G4 in the treble clef and C4, B3, A3, G3 in the bass clef. The piece concludes with a double bar line and a key signature change to G major.

### Concert D Scale

Musical notation for the first two measures of the Concert D Scale. The piece is in D major (two sharps) and 4/4 time. The tempo is marked as quarter note = 120. The first measure contains the notes D4, E4, F#4, G4 in the treble clef and D3, E3, F#3, G3 in the bass clef. The second measure contains the notes A4, B4, C5, D5 in the treble clef and A3, B3, C4, D4 in the bass clef.

Musical notation for the last two measures of the Concert D Scale. The third measure contains the notes E5, F#5, G5, A5 in the treble clef and E4, F#4, G4, A4 in the bass clef. The fourth measure contains the notes B5, C6, D6, C6, B5 in the treble clef and B4, C5, D5, C5, B4 in the bass clef. The piece concludes with a double bar line and a key signature change to D major.

Concert A Scale

$\text{♩} = 120$

Concert B Scale

$\text{♩} = 120$

Concert B Scale

*♩ = 120*

Concert F Scale

*♩ = 120*